



VICTORIA POLICE

Victoria Police is Identifying and Building Capability

Commander Neville Taylor
Capability Advisor
Victoria Police



Policing is shaped by dynamic external environments



- Better matching of resources to demand by rethinking the traditional operating model
- Improving capability through workforce reform and technology
- Collaborating more closely through partnerships



VICTORIA POLICE

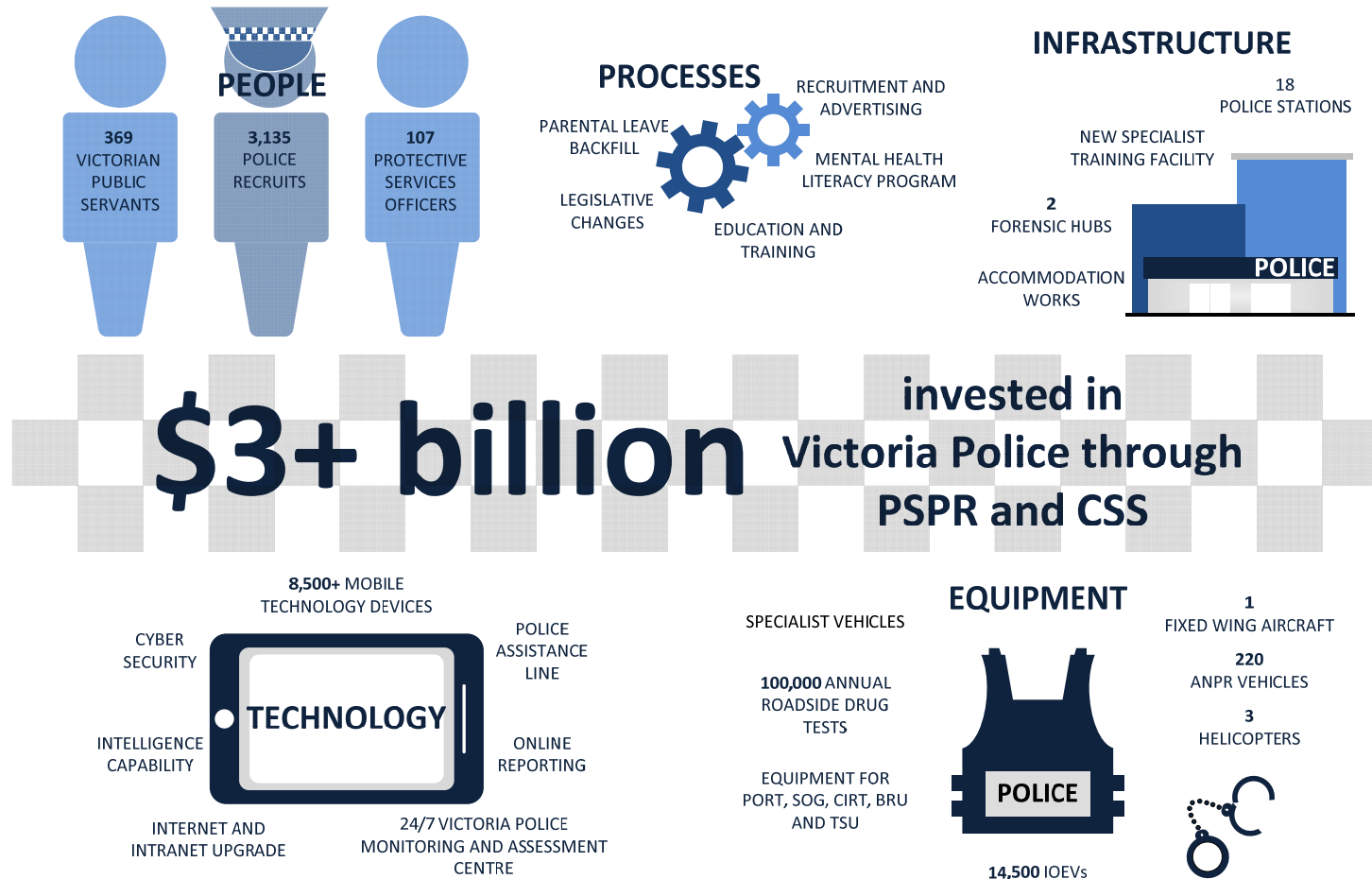


VICTORIA POLICE CAPABILITY PLAN 2016–2025:
CAPABILITY FRAMEWORK

Capability as an end to end planning investment process



Significant investment is uplifting many of the capabilities



Building capability by rethinking the traditional operating model



- Further details: http://www.police.vic.gov.au/content.asp?Document_ID=48