

Integrated Data and Crime Prevention

SOME NEW ZEALAND EXAMPLES

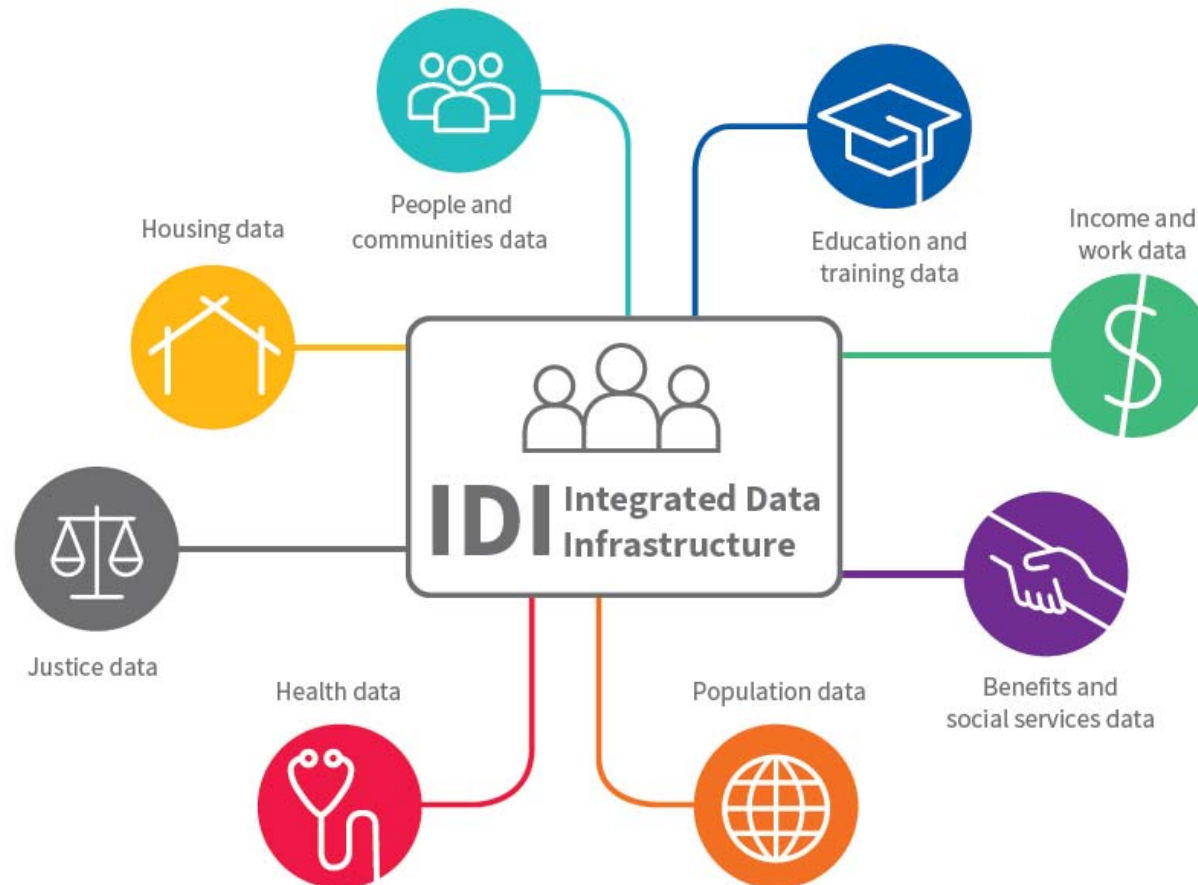
Police Conference, May 2 2018



Big data vs integrated data

- Real-time sensors (internet of things)
 - Image and voice processing
 - Social media
 - **Integrated (linked) administrative datasets**
-

The Integrated Data Infrastructure

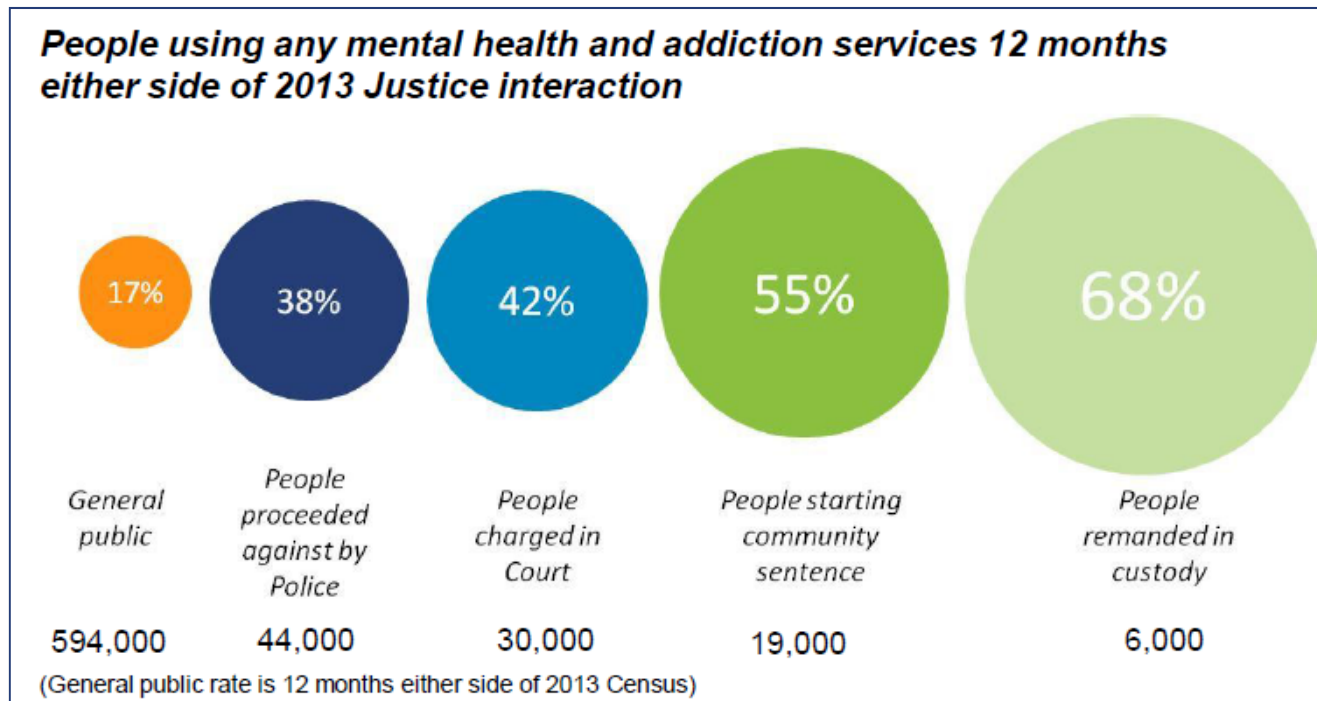


Using the IDI

- Strategic intelligence on wider needs of victims and offenders
 - Lifecourse offending prediction to support early intervention
 - Identify opportunities for crime prevention partnerships
-

Wider needs

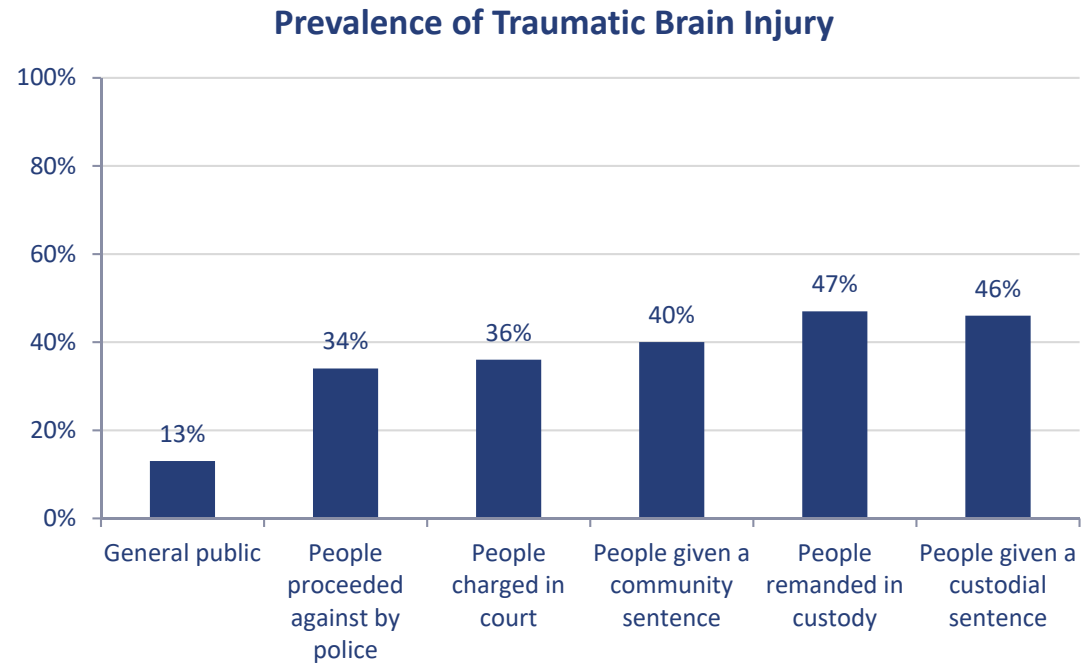
Mental Health/AOD



91% of prisoners have a lifetime diagnosis

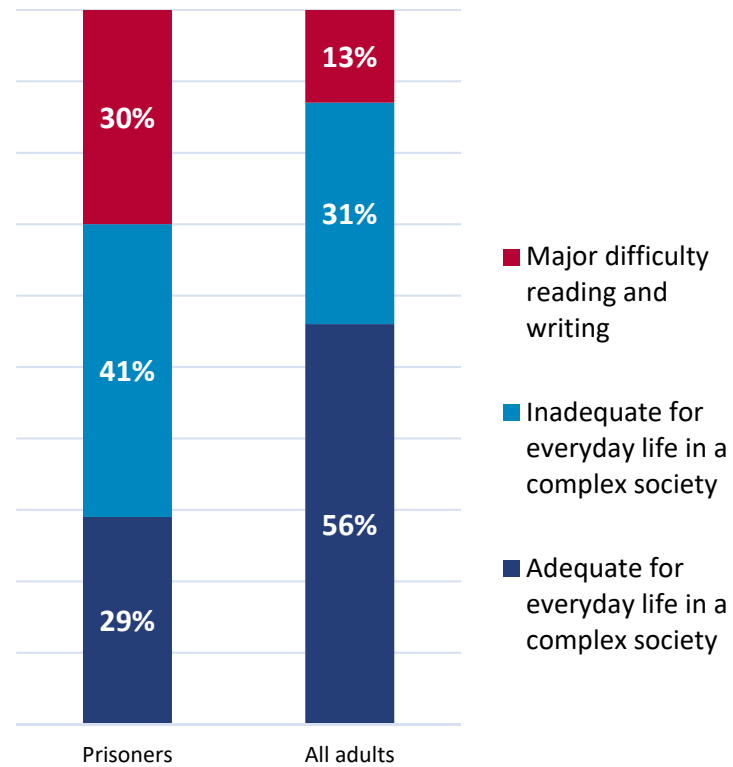
Wider needs

Traumatic Brain Injury



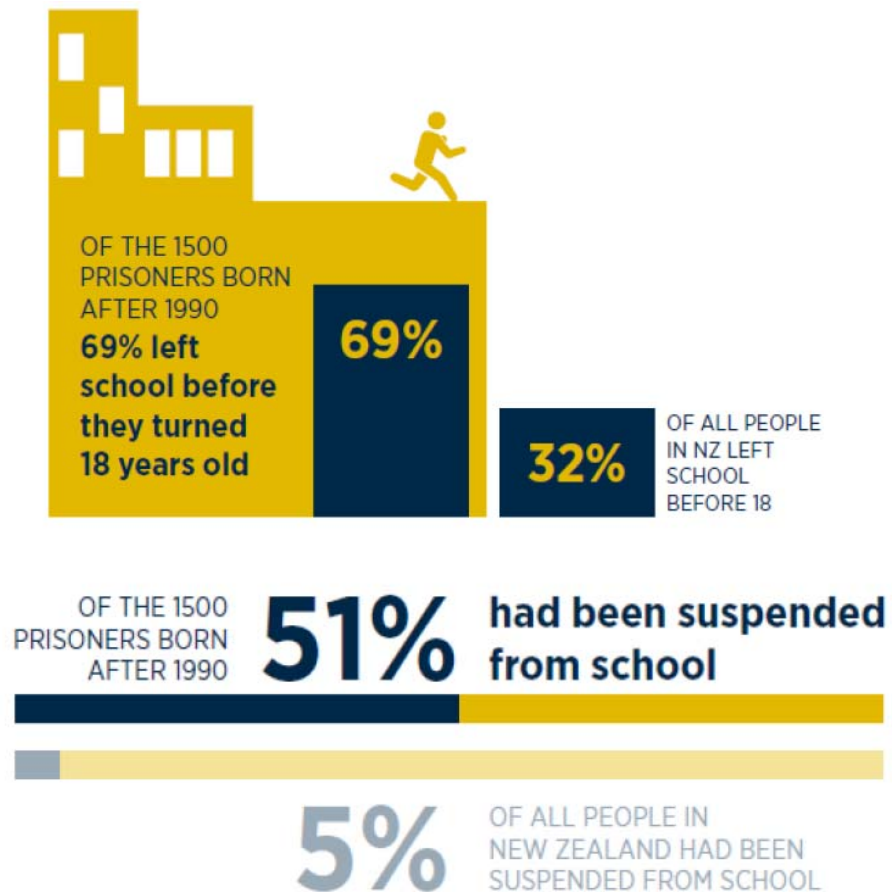
Wider needs

Literacy and numeracy



Lifecourse prediction

Schooling problems strongly predict crime



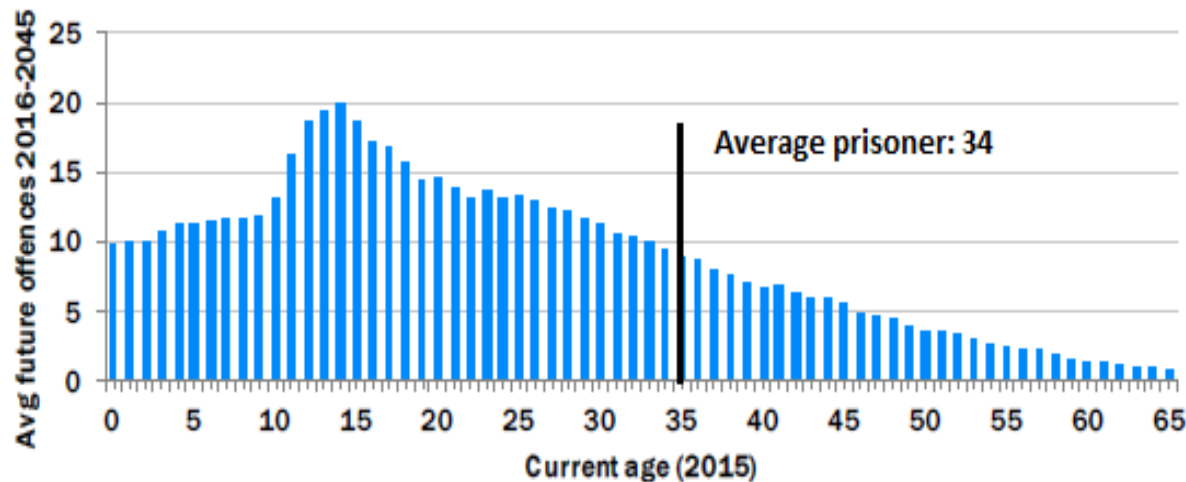
Lifecourse prediction

- We have used this information to project future offending in the NZ population.
 - We can understand the relative risk of different groups, but can't accurately predict individual offending trajectories
 - i.e. This isn't *Minority Report*
-

Lifecourse prediction

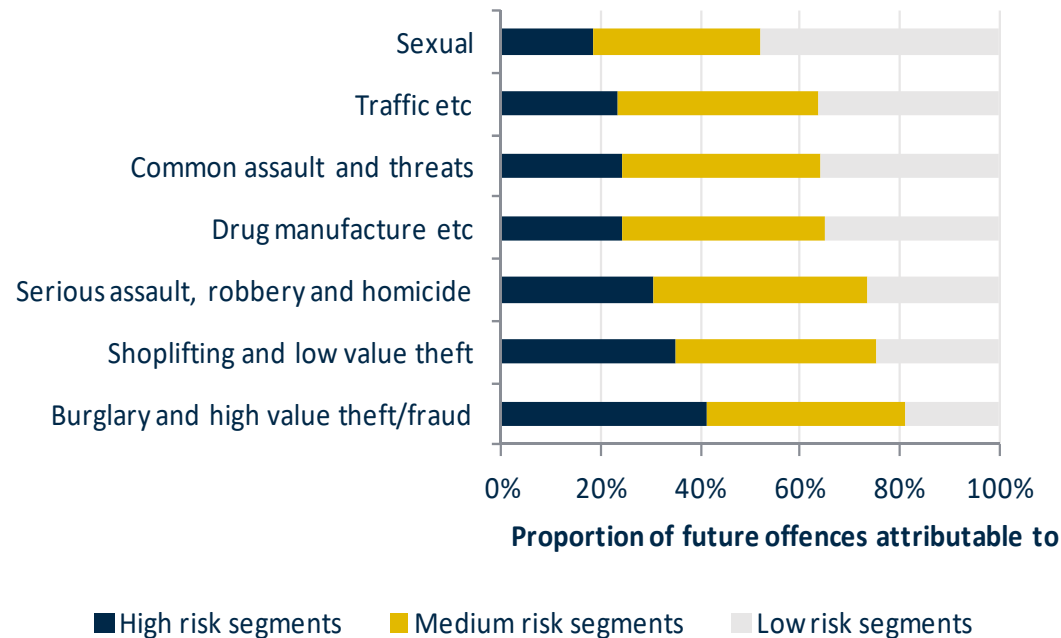
- Risk peaks at 14
- Before this, risk prediction is less accurate
- After this, people have less offending in their future
- By comparison, the average prisoner is 34

Future offences expected by riskiest 100 individuals at each age



Lifecourse prediction

- Most future offending will come from 'medium risk' people
- Risk is most concentrated for burglary
- Risk is least concentrated for sexual offending



Identifying partners

E.g. for 14-16 year old serious offenders

- 411 in Auckland
- 156 go to 10 Schools



Identifying partners

E.g. for 14-16 year old serious offenders

- 411 in Auckland
 - 156 go to 10 Schools

 - 197 recently used mental health or AOD services
 - 143 in social housing
 - 147 identify with an iwi
-

Integrated Data and Crime Prevention

SOME NEW ZEALAND EXAMPLES

ANZPAA Police Conference, May 2 2018

